

Mitsubishi Rayon Group Products Around You

Mitsubishi Rayon Group products help people experience comfort and safety in all environments, including in the home, at leisure, on the street and at the office.

At leisure

Tennis rackets

Carbon fiber "PYROFIL"
In addition to being used in tennis rackets, "PYROFIL" is used in bicycle frames and other sports and leisure products that play a big role in people's lives.

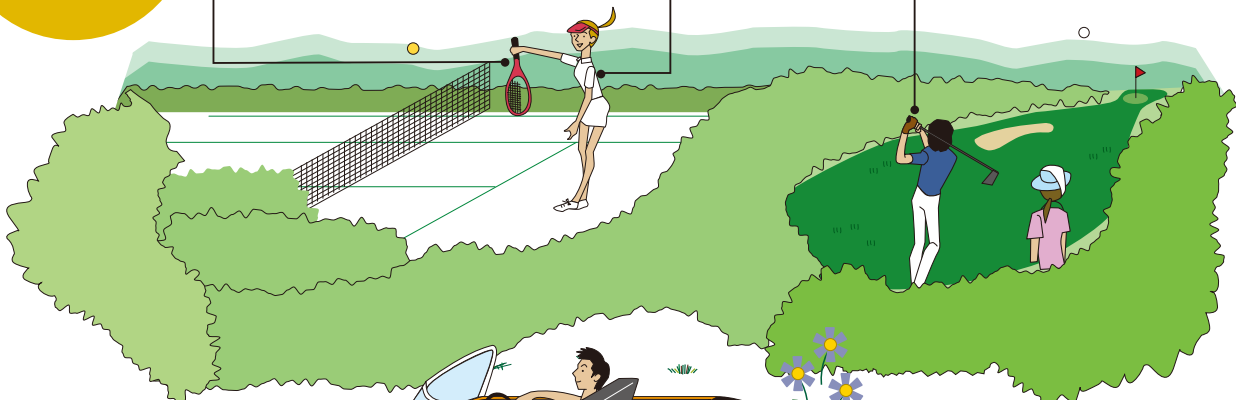


Sportswear

Ventilation fiber "VENTCOOL"
Natural crimps of "VENTCOOL" instantly elongate with moisture absorption and shrink as they dry. These "pulsating fibers" excel in hygroscopic properties and drying speed.

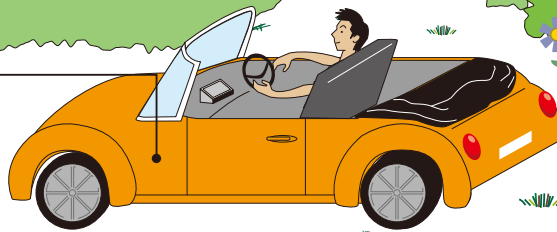
Golf club shafts

Carbon fiber "PYROFIL"
The world's top players and many other golf enthusiasts regularly use golf club shafts made by Mitsubishi Rayon and sold under the "Diamana" and "Bassara" brands.



In-car network

Plastic optical fiber "ESKA"
Lightweight and flexible, this acrylic resin optical fiber contributes to car weight reduction. It is drawing attention as an in-car network material.



Tail lamps

Acrylic molding material "ACRYPET"
In addition to being highly transparent, acrylic resin suffers little degradation from light and is scratch-resistant. It is used in auto parts and optical products.



At the office

Laptop computers

Prism sheets "DIAART"
Prism designs produced using Mitsubishi Rayon's original precision forming technology and sheet-developing technology allow PC manufacturers to make their displays brighter and thinner.



Cellular phones

Acrylic sheets "SHINKOLITE"
Transparent and abrasion-resistant, hard-coated acrylic sheets of "SHINKOLITE" MR are resistant to scratches in normal conditions of use. The sheets are used for the front surfaces of cellular phones.



Multifunctional printers

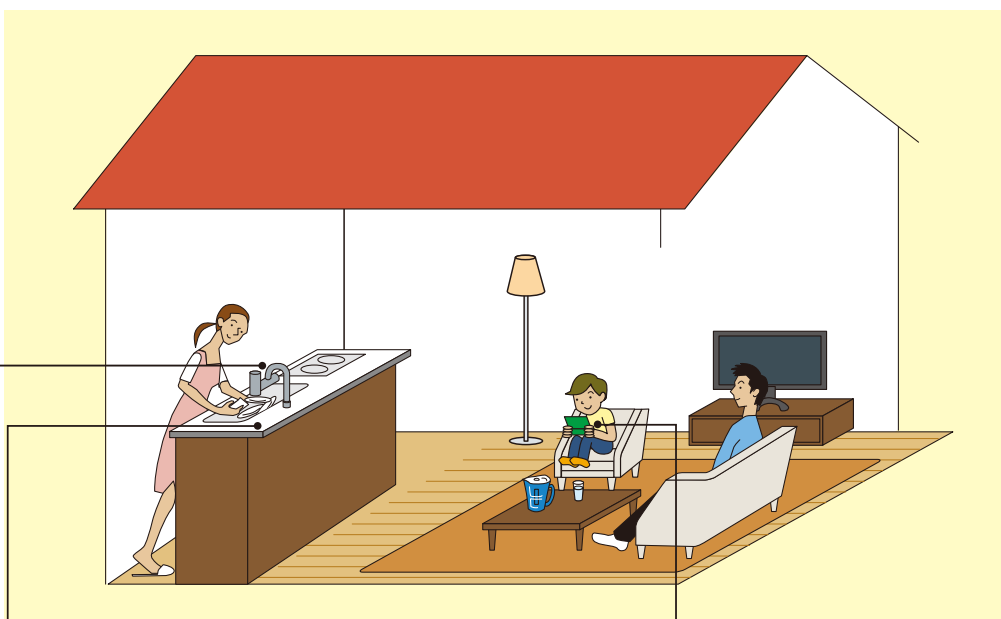
Rod lens array "RODSCOPE"
"RODSCOPE" is a scanner component whose color characteristics are enhanced to the level of glass with the full use of Mitsubishi Rayon's precision forming and optical design technologies. The rod lens array is popular for use in multifunctional printers.



In the home

Water purifiers

Home-use water purifiers "CLEANSUI" using hollow fiber membranes. Using the melt drawing technique, Mitsubishi Rayon manufactures its polyethylene hollow fiber membranes without solvents. The membranes are safe to use with drinking water. Mitsubishi Rayon offers a wide variety of "CLEANSUI" water purifiers, including faucet-mount, under-bench and pitcher models.



Kitchen counters

Solid surface materials "Du Pont™ CORIAN®". The properties of this acrylic cultured marble are reinforced with high-quality minerals mixed into acrylic resin. "Du Pont™ CORIAN®" offers warmth, softness and depth, despite being cultured marble. It is used for kitchen counters and washstands.



"Maxima" kitchen by Composit; photo Du Pont™ CORIAN®

Gaming consoles

Acrylic sheets "SHINKOLITE". Transparent, clear and abrasion-resistant, hard-coated acrylic sheets of "SHINKOLITE" MR are used for the front guard plates of small LCD gadgets, including gaming consoles, and the front surfaces of TVs and PC displays.

Water treatment and purification facilities

Hollow fiber membrane filter "STERAPORE". Water purification facilities purify river water, industrial water and groundwater. High integration allows hollow fiber membranes with a low cubic capacity to purify large volumes of water.



Signboards

Acrylic sheets "SHINKOLITE". SHINKOLITE has an excellent resistance to sunlight, weather, and both high and low temperatures.

Anti-polluting paint for ship hulls

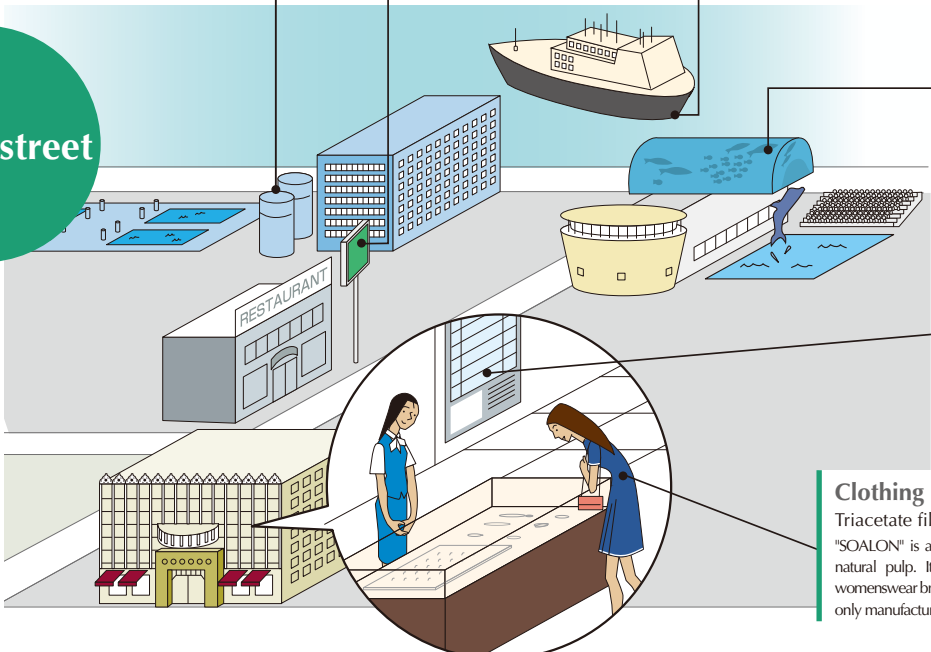
Acrylic paint "DIANAL". "DIANAL" contains no organic tin. This non-tin paint for ship hulls has a negligible marine pollution effect.

Aquariums

Acrylic sheets "SHINKOLITE". Excellent in transparency and formability, these acrylic sheets are used in large and tunnel aquariums. They vividly convey the activities of ocean life.



On the street



Display panels

Lit signboards "ILLUMI LIGHT". "ILLUMI LIGHT" is a high-intensity diffuser with a uniform brightness designed for LED light sources that are finding growing acceptance. The diffuser allows manufacturers to make LED displays thinner by preventing uneven brightness, even at a short distance from light sources.

Clothing

Triacetate filaments "SOALON". "SOALON" is a biomass material or wood fiber made with natural pulp. It is a rare material favored by high-grade womenswear brands around the globe. Mitsubishi Rayon is the only manufacturer of this material in the world.